

# XERO Product Service Manual

## 1. GENERAL INFORMATION

This user manual is intended for the user of XERO wheel products. This instruction manual includes information on the essential maintenance and procedures of the wheels.

Users must read and understand this manual before using the components. Third-party users must also be informed about the following provisions.

For more warranty conditions, please contact [service@xerowheels.com](mailto:service@xerowheels.com)

## 2. SAFETY



### DANGER

Incorrect installation, maintenance or servicing can lead to accidents causing severe injuries or death!

- Compliance with the following provisions is a prerequisite for accident-free use and faultless performance.
- Assembly and maintenance of the wheels requires a basic knowledge of handling bicycle components. If in any doubt, consult your retailer and/or regional distributor.
- The wheels should be used only in accordance with their intended use and recommended categories. Otherwise the user shall assume responsibility.
- The maximum system weight of the wheels must not be exceeded.
- The maximum tire pressure of the wheel and of the tire used must not be exceeded XERO declared tire pressure.
- The wheels must be compatible with all parts of the bicycle.
- Only use original XERO Wheels spare parts. Otherwise the user shall assume responsibility.
- The wheels must not be changed or modified.
- Regularly check the spoke tension, dish and wear of the wheel.
- Regularly check the wheel for damage or defect before and after each ride.
- The wheels must not be used if they are damaged or there are any signs of damage. If in any doubt, consult your retailer and/or regional distributor.
- If the tubeless-ready tape is worn and/or damaged, there is a risk of sudden tire pressure loss which can lead to accidents with serious injuries or even death.
- Check tubeless-ready tape regularly for signs of wear or abnormal form.
- The wheels must not be used if they are damaged or there are any signs of damage. If in any doubt, consult your retailer and/or regional distributor.
- Assembly and maintenance of the wheels requires a basic knowledge of handling bicycle components. If in any doubt, consult your retailer and/or regional distributor.

- The wheels should be used only in accordance with their intended use and recommended categories. Otherwise the user shall assume responsibility.
- The maximum system weight of the wheels must not be exceeded.
- The maximum tire pressure of the wheel and of the tire used must not be exceeded XERO declared tire pressure.
- The wheels must be compatible with all parts of the bicycle.
- Only use original XERO Wheels spare parts. Otherwise the user shall assume responsibility.
- The wheels must not be changed or modified.
- Regularly check the spoke tension, dish and wear of the wheel.
- Regularly check the wheel for damage or defect before and after each ride.
- The wheels must not be used if they are damaged or there are any signs of damage. If in any doubt, consult your retailer and/or regional distributor.
- If the tubeless-ready tape is worn and/or damaged, there is a risk of sudden tire pressure loss which can lead to accidents with serious injuries or even death.
- Check tubeless-ready tape regularly for signs of wear or abnormal form.
- The wheels must not be used if they are damaged or there are any signs of damage. If in any doubt, consult your retailer and/or regional distributor.



#### **CAUTION**

##### **Risk of damaging the wheel by selecting inappropriate tools.**

- Do not use metal tire levers. They can damage the surface of the rim, tire, or inner tube.
- Use only valves with a suitable diameter and of an adequate length. The valve hole must not be modified.
- Use only rim tape, inner tubes and tires which fit the dimensions of the rim.

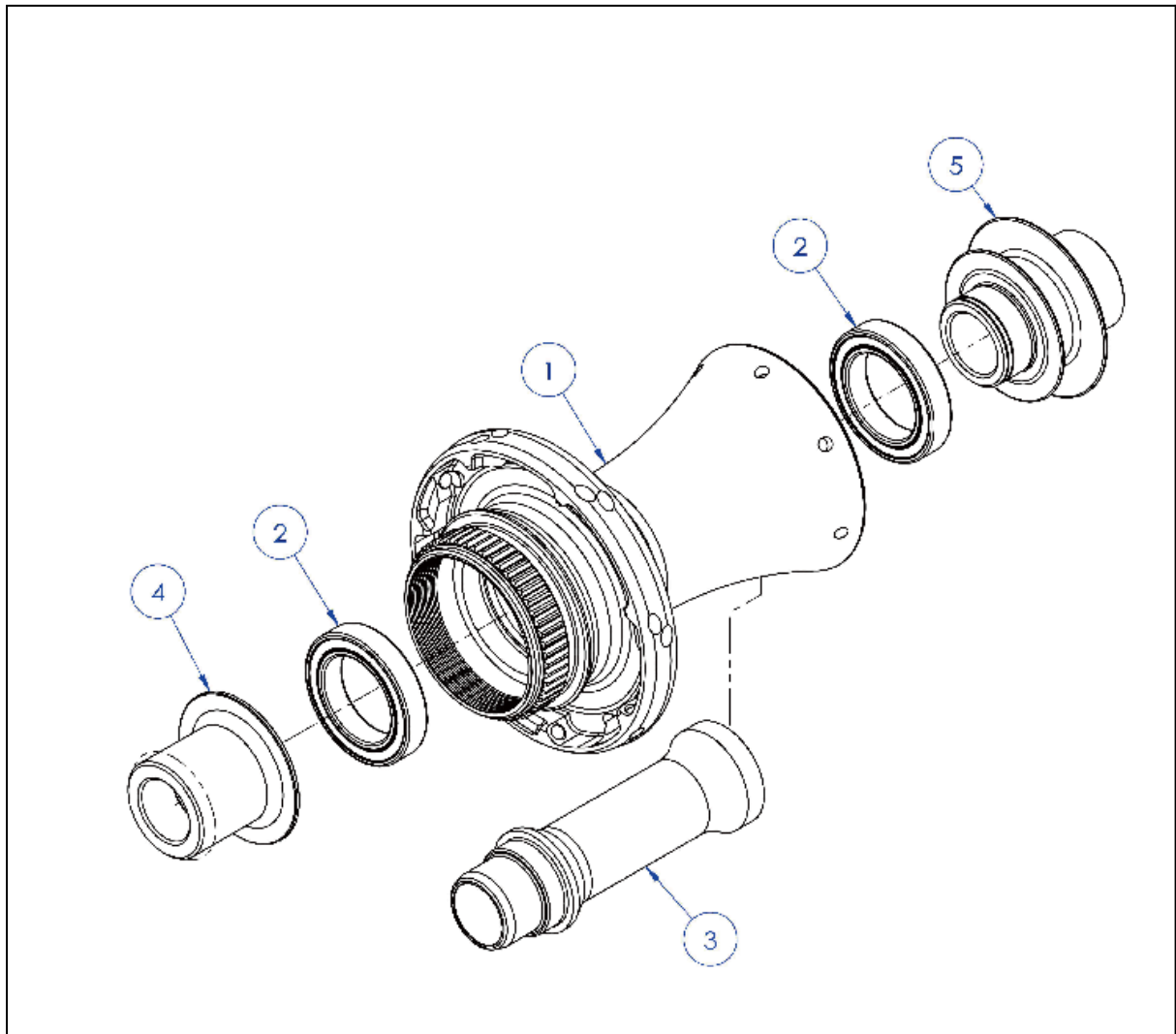
##### **Potential damage to the rim from unsuitable sealant fluid**

- XERO recommends sealant fluid not containing materials which corrode wheel product materials. If in doubt, please contact the manufacturer.
- The rim must be inspected regularly for corrosion damage. If there is visible corrosion, the rim must not be used further.
- In the case of corrosion caused by the use of unsuitable sealant fluid, XERO declines any warranty whatsoever.
- Remove sealant fluid when storage period and/or when bicycle is not in use is above 1 month.

## **CATEGORY**

The range of use of XERO Wheels confronts and follows ASTM Designation: F2043 – 13 (Standard Classification for Bicycle Usage). Riders should understand and use XERO Wheels products in accordance with their intended use. Otherwise the user shall assume responsibility.

## MAINTENANCE OF THE FRONT HUB OVERVIEW

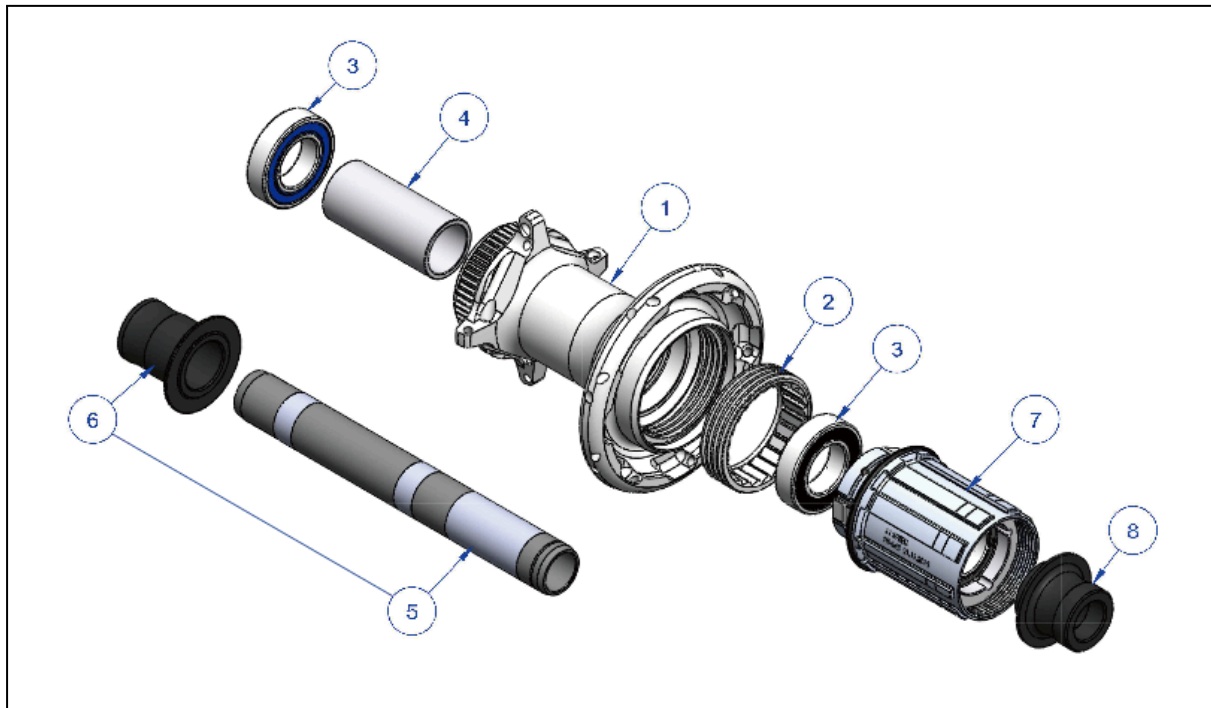


- 1. front hub shell
- 2. bearing
- 3. axle
- 4. end cap (disc side)
- 5. end cap (non-disc side)

### STEPS

- 1. Pull off (5) end cap by hand
- 2. Pull off (4) end cap by hand
- 3. Check parts by eyes. Grease both bearings and inner side of both end caps.
- 4. Assemble parts by steps 2, 1.
- 5. Check the tightness of the (4.5) end caps.

## MAINTENANCE OF THE REAR HUB OVERVIEW



- 1. rear hub shell
- 2. gear ring
- 3. bearing
- 4. hub spacer
- 5+6. axle set
- 7. freehub body
- 8. end cap (drive side)

### STEPS

1. Pull off (8) end cap by hand
2. Pull off (7) freehub body by hand
3. Pull off (4) hub spacer off the axle
4. Pull off (5+6) axle set by hand
5. Check parts by eyes. Grease both bearings and inner side of both end caps.
6. Assemble parts by steps 4, 3, 2, 1.
7. Check the tightness of the (8) end cap.
8. Check the functionality: Turn the freehub body in both directions.
  - >The freehub can be turned counterclockwise without hinder.
  - >The freehub cannot be turned clockwise.

## DISMOUNTING / ASSEMBLY OF THE FRONT HUB

### STEPS

1. Pull off (5) end cap by hand
2. Pull off (4) end cap by hand
3. Use a rubber hammer to tap out the (3) axle from disc side
4. Extract (2) the bearing with bearing extractor tool.
5. Check parts by eyes. Grease both bearings and inner side of both end caps.
6. Assemble (2) the bearing of Disc side
7. Insert (3) axle. Place the axle into position.
8. Assemble (2) the bearing of non-Disc side
9. Assemble (4) end cap by hand
10. Assemble (5) end cap by hand
11. Check the tightness of the (4.5) end caps.

## DISMOUNTING / ASSEMBLY OF THE REAR HUB

### STEPS

1. Pull off (8) end cap by hand
2. Pull off (7) freehub body by hand
3. Pull off (4) hub spacer off the axle
4. Pull off (5+6) axle set by hand
5. Extract (3) the bearing with bearing extractor tool from disc side.
6. Take (4) hub spacer out of the hub.
7. Extract (3) the bearing with bearing extractor tool from drive side.
8. Assemble (3) the bearing of drive side
9. Insert (4) hub spacer into the hub.
10. Assemble (3) the bearing of the disc side
11. Check parts by eyes. Grease both bearings and inner side of both end caps.
12. Assemble (7) freehub body
13. Assemble (8) end cap by hand.
14. Check the tightness of the (8) end cap.
15. Check the functionality: Turn the freehub body in both directions.
  - >The freehub should be turned counterclockwise without hinder.
  - >The freehub cannot be turned clockwise.

## LACING OF THE FRONT HUB

### CAUTION

\*Operator/Mechanic should follow the right order of XERO hub lacing. Assembly of the wheels requires knowledge and experience of handling bicycle components. If in any doubt, consult your retailer and/or regional distributor.

## STEPS

### Non-Disc Side

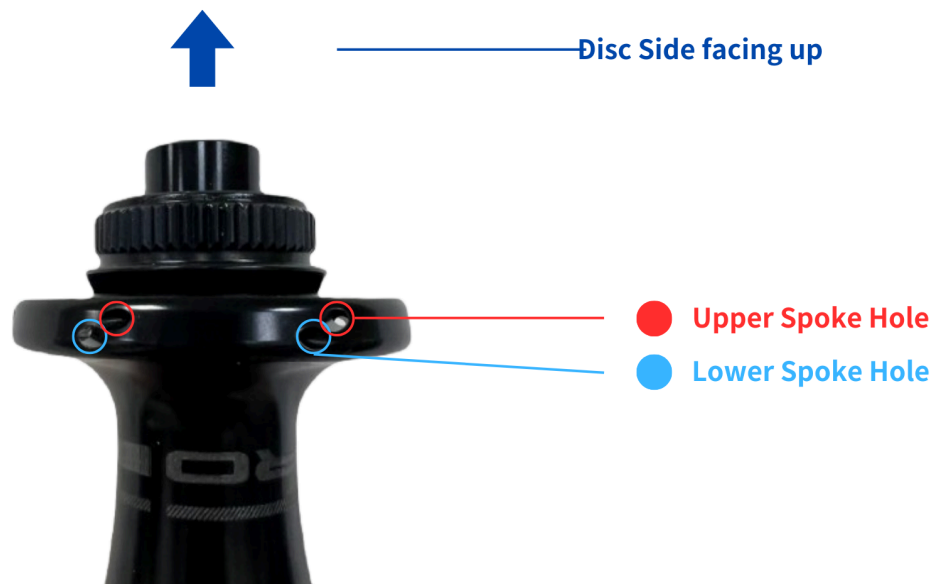
1. Pull off (5) end cap by hand
2. Lacing the spokes according to the spoke holes.

### Disc Side

1. Lacing the spokes into the lower spoke holes.
2. Lacing the spokes into the upper spoke holes.
3. Check the crosses according to the instructions below.

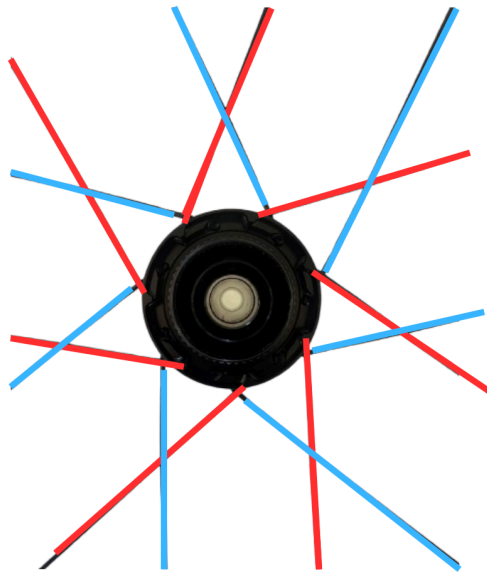
## FRONT HUB

TX-150



## FRONT HUB LACING

TX-150



Disc Side

● Upper Spoke

● Lower Spoke

## LACING OF THE REAR HUB

### STEPS

Non-Drive Side

1. Lacing the spokes into the lower spoke holes.
2. Lacing the spokes into the upper spoke holes.
3. Check the crosses according to the instructions below.

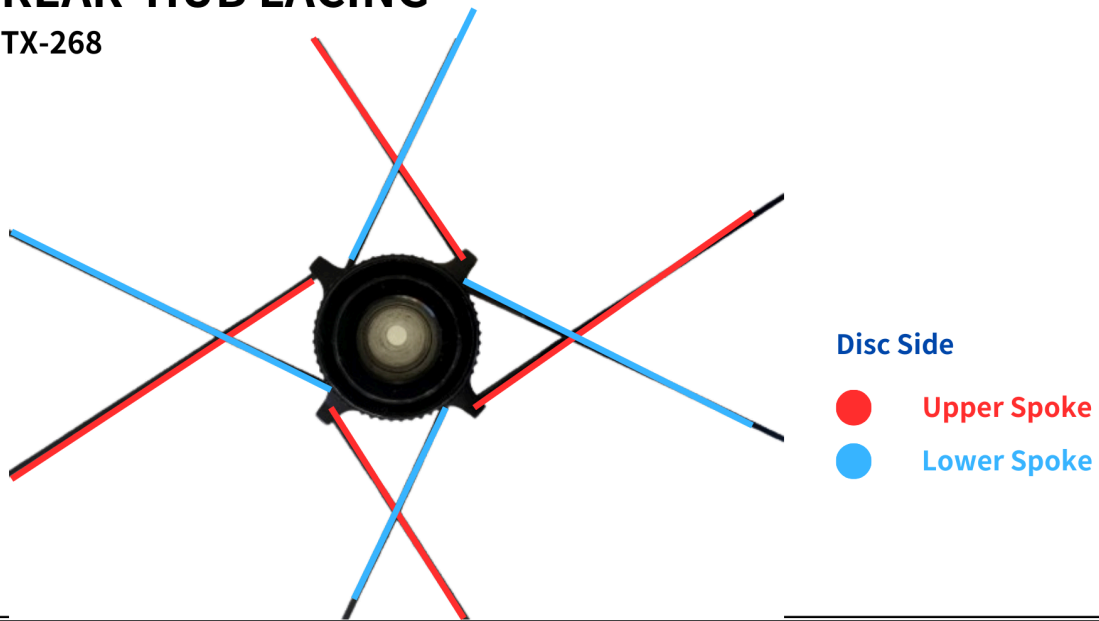
## REAR HUB

TX-268



## REAR HUB LACING

TX-268

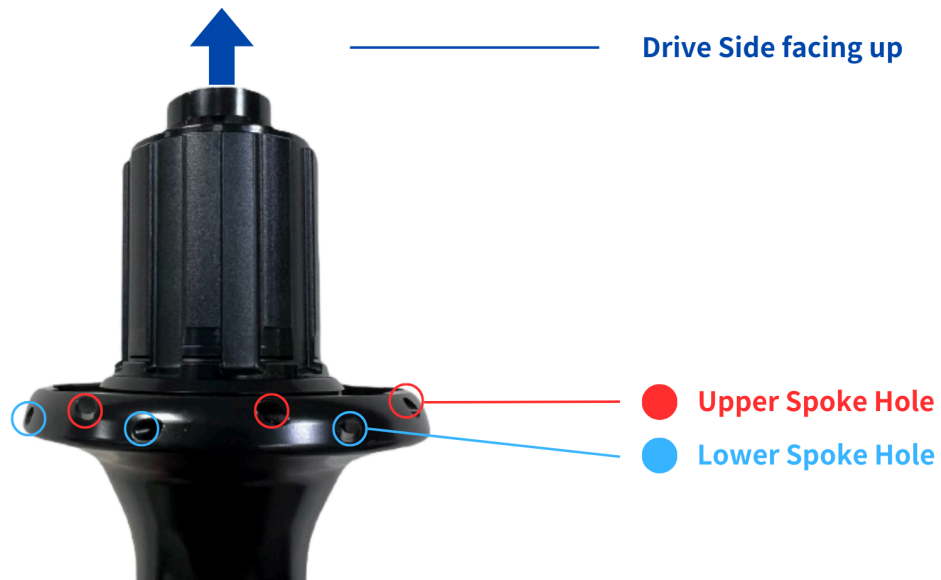


Drive Side

1. Lacing the spokes into the lower spoke holes.
2. Lacing the spokes into the upper spoke holes.
3. Check the crosses according to the instructions below.

## REAR HUB

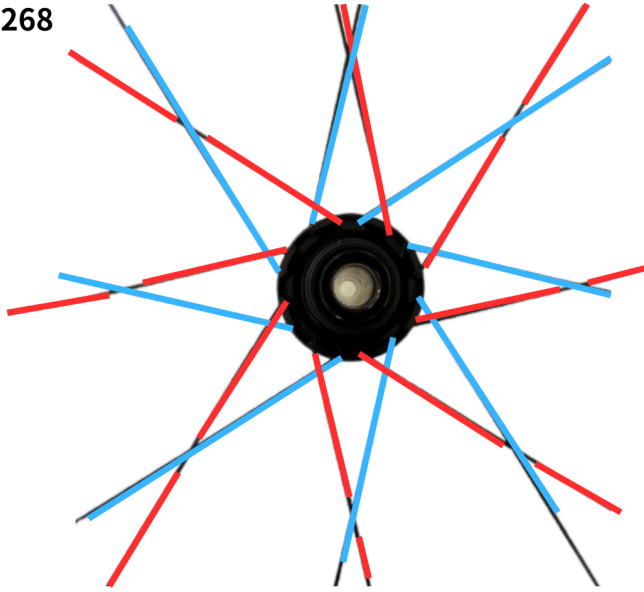
TX-268





# REAR HUB LACING

TX-268



Drive Side

- Upper Spoke
- Lower Spoke